





Q G2-3

DESOE
GRUPO ELECTROGENO
N°2

Control panel with a digital display showing a green waveform and several buttons below it.

Emergency stop button (red) and STOP button (green).

Masterboard

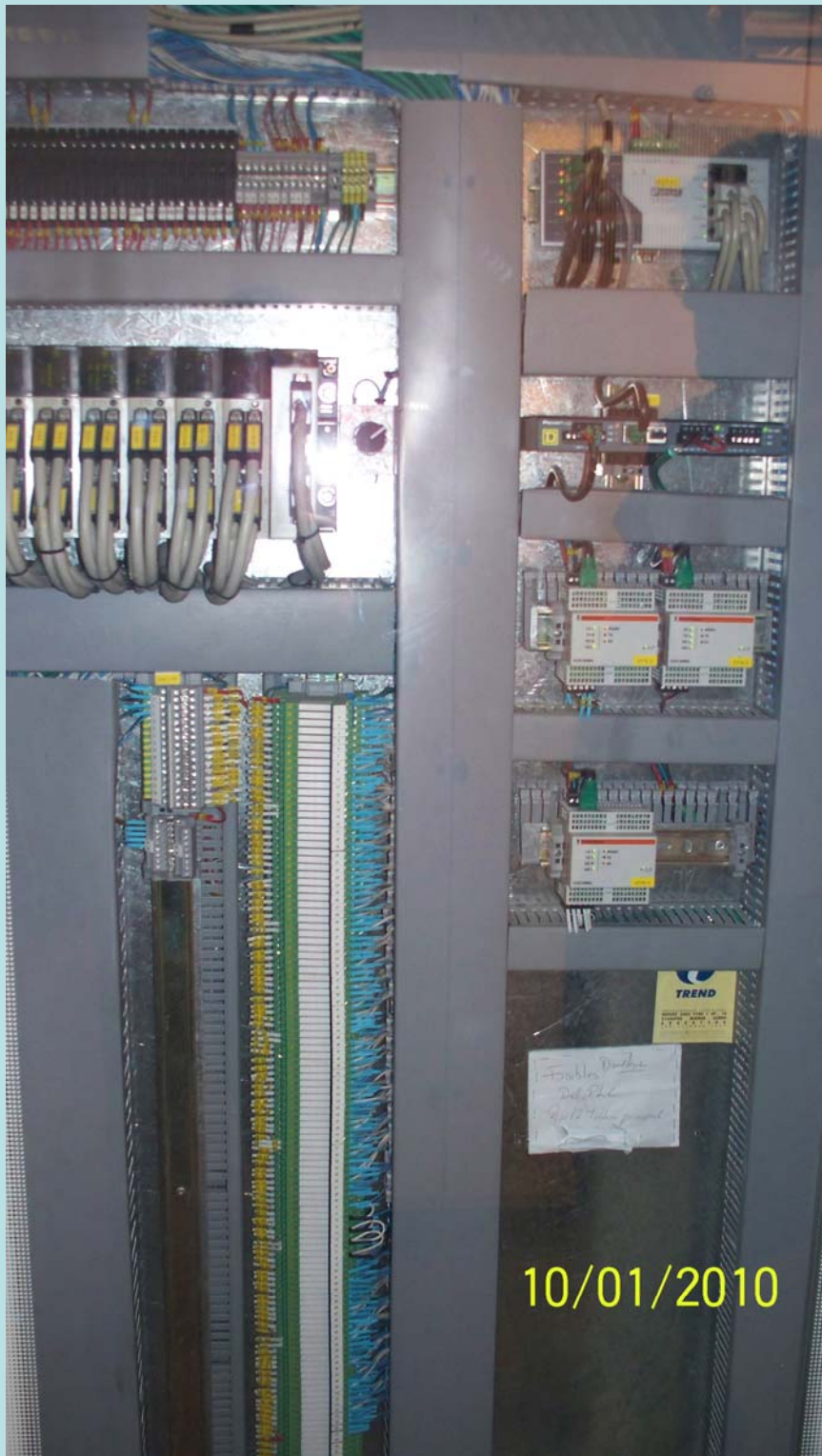
Modelo	Marca
10000	10000
10	10
10000	10
10000	10

Prism

10/01/2010



2007/01/01



10/01/2010

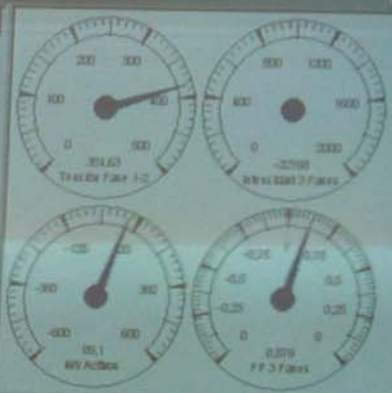
MT1 Sepam
MT2 Sepam

Sepam 1000+ : Medidas de intensidad, lecturas

Dispositivo: MT2_Sepam

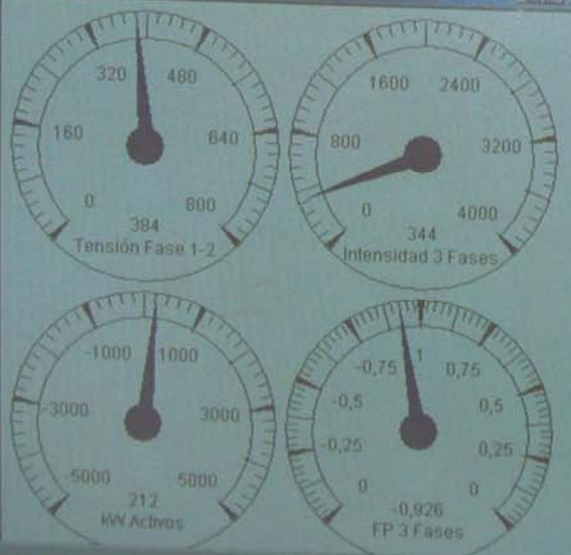
	Actual (A)	Media (A)	
Fase 1	10,5	9,4	22
Fase 2	10,5	9,4	22
Fase 3	10,2	9,2	22
Tierra	0		22

Medidor - Q1
Q1
Q50



Medidor - T1

T1
T2



Medidor - GE1

GE1
GE2



2007/01/01



2007/01/01

	U12	U23	U31	U1N	U2N	U3N
Mains 1	382V	382V	382V	—	—	—
Inverter	0 V	0 V	0 V	219V	219V	219V
Mains 2	379V	379V	379V	0 V	0 V	0 V
Output	380V	381V	384V	219V	220V	221V

CORRIENTES

	I1	I2	I3
Mains 1	33 A	32 A	33 A
Inverter	0 A	0 A	0 A
Mains 2	0 A	0 A	0 A
Output	41 A	24 A	18 A

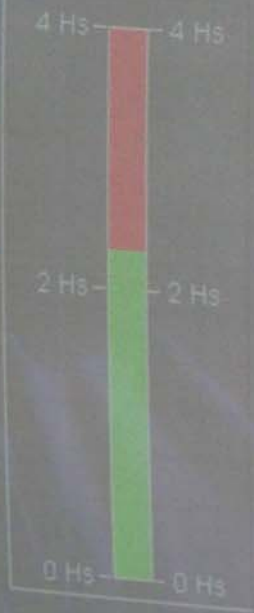
POTENCIAS

	F1	F2	F3	Total
Active	17 kW	4 kW	3 kW	17 kW
Aparent	5 kVA	5 kVA	3 kVA	19 kVA
Output load level	15 %			
Power factor	1.00			

BATERIA

I Battery	0 A
U Battery	442 V
Nominal backup time	30 Min.
Battery backup time	146 Min.
Battery room temperature	25 °C
Battery charging level	100 %
Battery recharge duration	0 Min.

AUTONOMIA



FRECUENCIAS

Frecuency mains 1	49 Hz
Frecuency inverter	49 Hz
Frecuency mains 2	49 Hz
Frecuency output	49 Hz

ESTADOS DE FUNCIONAMIENTO

- Carga alimentada por BY-PASS
- Carga alimentada desde baterías

ALARMAS

- Falla General
- Alarma Autonomia Bateria

2007/01/01